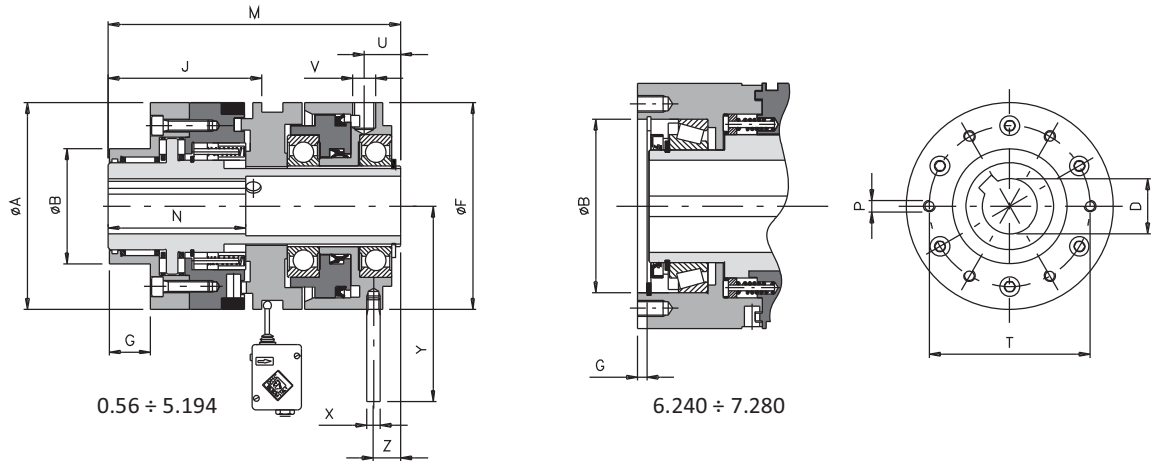


DSR/F/AP (roller phase pneumatic clutch): technical data



- Transmission through rollers with re-engagement in phase 360° (equidistant on request, 30°, 45°, ...).
- Free rotation for long periods after overload: ... / CS.
- Suitable for high rotation speeds.
- Maintenance free for high reliability.
- Arranged to add a microswitch / proximity to stop the motor drive.
- Torque range: 5 – 30000 Nm; max. bore $\phi 120$ mm.



DIMENSIONS AND TECHNICAL DETAILS

Size	Torque [Nm] 1 - 6 - 15 bar	A	Standard flange				D H7 max.	F	J	M	N	U	V	Z	X	Y	Max. speed [Rpm]	Weight [Kg]
			B h7	G	P	T												
0.56	7 - 29 - 70	56	38	10	M5	48	18	56	56	97	45	11,5	1/8"	7,5	6	63	11000	1,5
1.90	15 - 115 - 280	90	50	18	M5	70	25	90	67,5	127,5	60	15	1/4"	11	6	80	7000	5,0
2.110	20 - 195 - 480	110	60	20	M6	89	38	110	85	147,5	70	17,5	1/4"	13,5	8	105	5000	9,0
3.130	25 - 310 - 780	130	80	19	M8	105	45	130	90,5	160	100	18,5	1/4"	14,5	8	115	4300	13,3
4.160	55 - 530 - 1335	160	100	22	M10	125	55	160	109	191,5	115	25	1/4"	17	10	146	3600	19,0
5.194	330 - 1600 - 3970	194	120	26	M12	155	65	215	125	201,5	145	30	1/4"	22	12	184	3200	35,8
6.240 CB	1100 - 5800	240	▲	▲	M16	200	90	290	▲	306,5	▲	▲	On request	▲	▲	▲	▲	▲
6.240 CA	3400 - 15000	240			M16	200	90	290		356,5								
7.280 CB	1500 - 7500	280			M20	230	120	345		320								
7.280 CA	7000 - 30000	280			M20	230	120	345		375								

TORQUE TRANSMISSION

Size	Torque transmission [Nm] according to the pressure [bar]							
	1	2	3	4	5	6	10	15
0.56	7	11	16	20	24	29	45	70
1.90	15	35	55	75	95	115	185	280
2.110	20	50	85	125	160	195	330	480
3.130	25	80	135	195	250	310	520	780
4.160	55	150	245	340	435	530	900	1335
5.194	330	550	830	1085	1340	1600	2600	3970
6.240 CB	1100	2000	3000	3900	4800	5800	-	-
6.240 CA	3400	6200	9040	11760	15000	-	-	-
7.280 CB	1500	2500	3700	5000	6200	7500	-	-
7.280 CA	5000	10000	15000	20000	25000	30000	-	-

NOTES





⊗ Technical details: weights are relevant to the torque limiter with pilot bore (DSR/F/AP).



- ⊙ Simple and precise calibration.
- ⊙ Transmission engagement / disengagement and torque limiter functions.
- ⊙ Reliability and repetitiveness of the calibration torque.
- ⊙ Torque variation whilst in motion, by pressure regulation.
- ⊙ Free rotation after the disengagement through a complete disconnection between the parts.
- ⊙ Low residual torque on disconnected parts.
- ⊙ Models available only with finished bore.

ON REQUEST

- ⊙ Complete with transmission element machined and assembled (plate wheel, pulley, gear, ...).
- ⊙ Can be supplied with various types of rigid/elastic couplings for in-line shafts transmission.
- ⊙ Possibility of shaft connection with finished bore, locking assembly or other systems.
- ⊙ Available in anti-corrosive version, with specific surface treatments.

	DSR/F/AP: Complete engagement-disengagement of the transmission, also for long periods	from 7 to 30000 Nm max bore \varnothing 120 mm	Page 34
	DSR/F/AP + GEC: compact coaxial connection for simple maintenance without being forced to remove the coupling	from 7 to 30000 Nm max bore \varnothing 180 mm	Page 35
	DSF/TF/AP: friction motion transmission as tensioner	from 3 to 875 Nm max bore \varnothing 65 mm	Page 36
	DSF/TF/AP/TAC: simple and economic coaxial shaft connection.	from 3 to 875 Nm max bore \varnothing 80 mm	Page 37

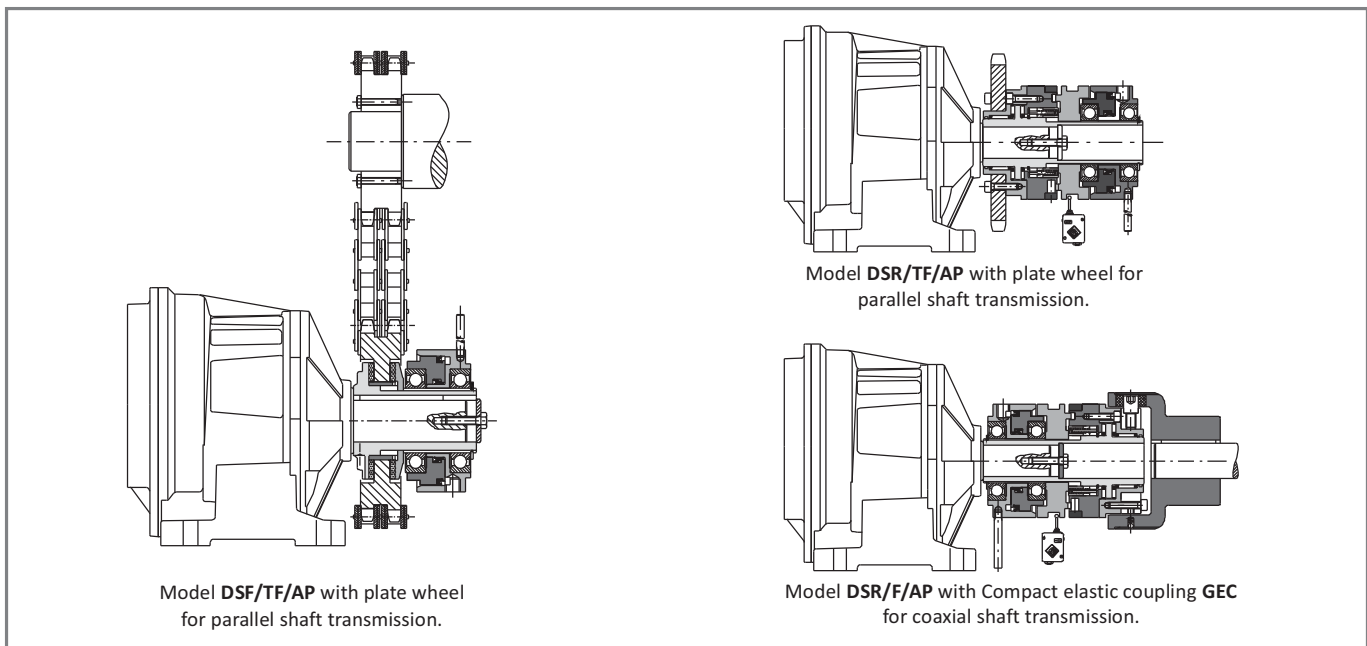
MAIN APPLICATION

- ⊙ Machines with work cycles of variable torque.
- ⊙ Test benches.
- ⊙ Coiler and uncoilers.
- ⊙ Transmission systems with varied products.
- ⊙ Cut format systems.

ADVANTAGES AND BENEFITS

- ⊙ Engage/disengage different product transmission lines.
- ⊙ Maintain tension of wire/film coils.
- ⊙ Regulate different torques depending on the change of the format.
- ⊙ Protect the motor gearbox against every form of overload.
- ⊙ When it's necessary for complete disengagement of the transmission.

ASSEMBLY EXAMPLES

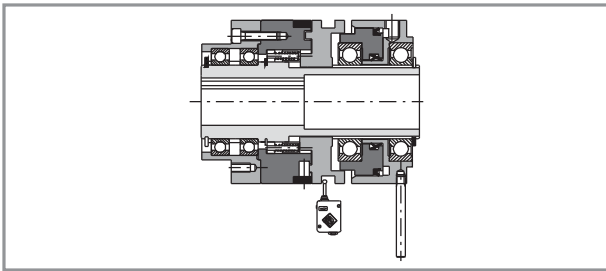


NOTE

⊗ Avoid rigid locking of the anti-rotating pin of the cylinder as it can cause imbalances during rotation

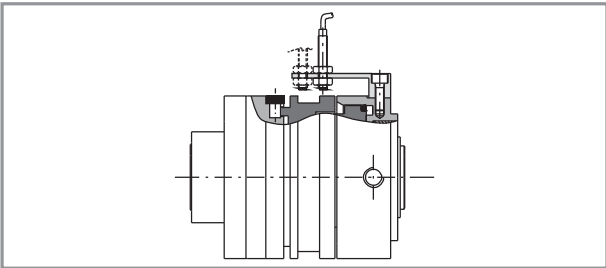
PNEUMATIC CLUTCH ".../AP": additional information

MODELS ON REQUEST:



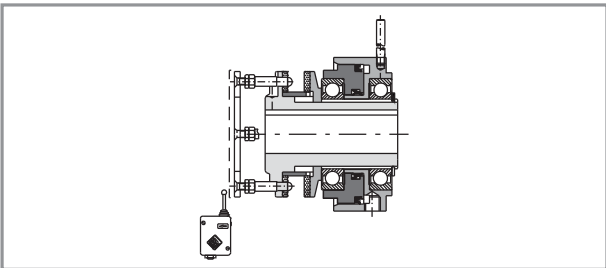
DSR/F/AP/CS

Version with ball bearings as an alternative to the rollers. Suitable for long rotation on disengagement.



.../PRX

Version with proximity inductive sensor PRX M8x1, integrated into the DSR/F/AP. Compact and versatile solution, without adding equipment and/or external components.



DSF/TF/AP/SI

Friction clutch with intervention signal and further automatic re-engagement. This characteristic requires particular machining on the drive element, which has to be supplied together with the torque limiter.

ORDER EXAMPLE

