






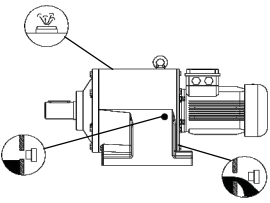
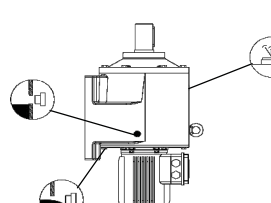
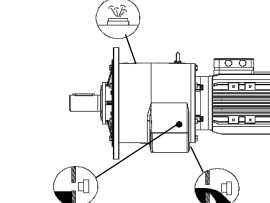
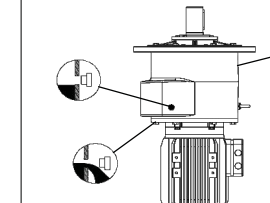
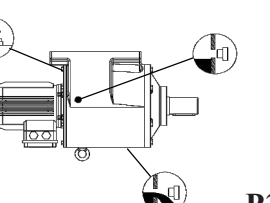
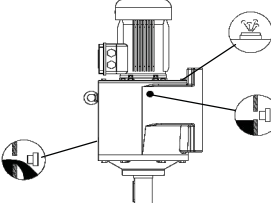
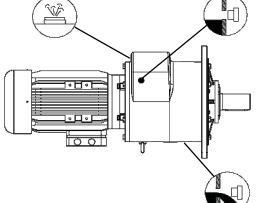
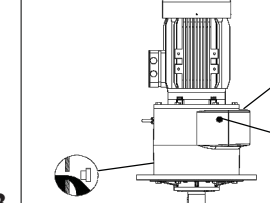
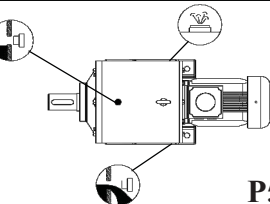
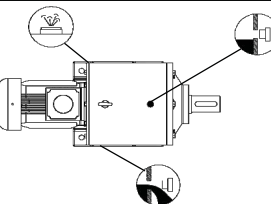
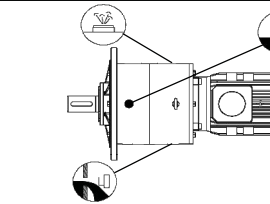
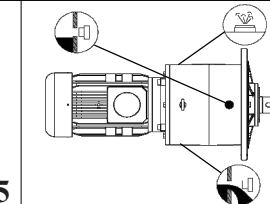


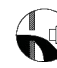


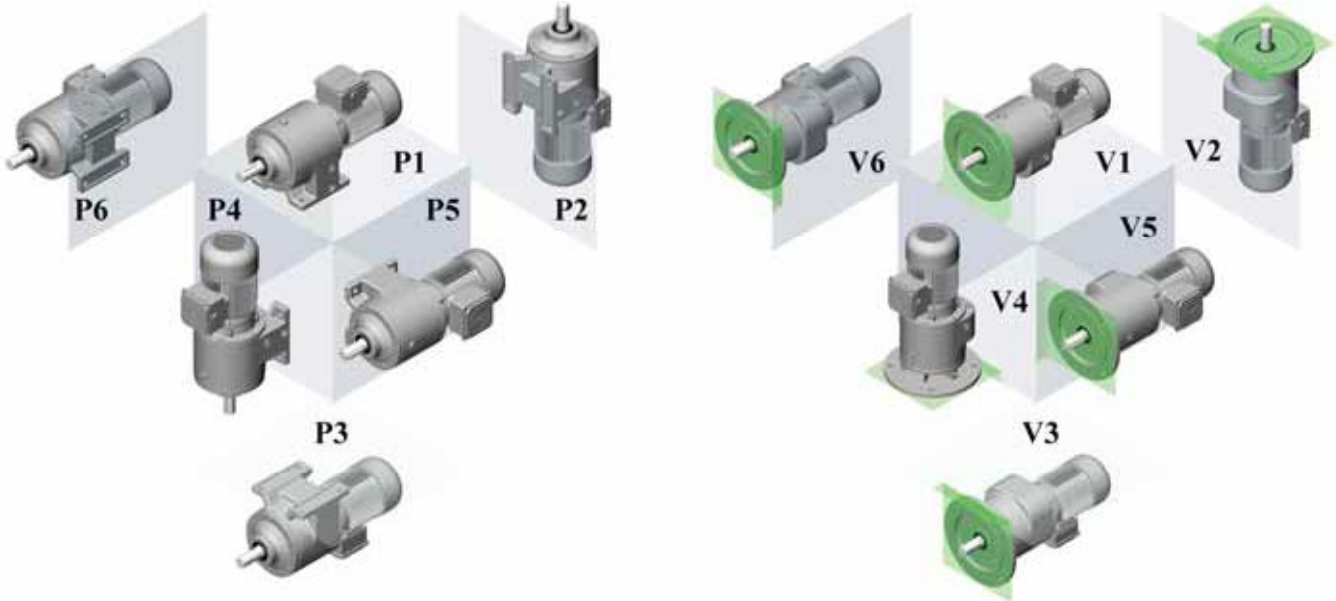
Yağ Tablosu

Lubricant Table

Schmiere Tabelle

Yağ Cinsi Lubricant Art des Schmierstoffes	ISO Viskozite Sınıfı ISO Viscosity Class Viskozite Sınıfı ISO	Kullanım Sıcaklığı Usage Temperature Gebrauchstemperatur	Firma Firm Firma						
									
Mineral Yağ Mineral Oil Minerallöl	ISO VG 320	0.....+100	Degol BG 320	Mobilgear 632	Energol GR-XP320	Omala 320	Belgear M-320-Süper	GEM 1 320	Spartan EP 320
	ISO VG 220	-5.....+100	Degol BG 220	Mobilgear 630	Energol GR-XP220	Omala 220	Belgear M-220-Süper	GEM 1 220	Spartan EP 220
	ISO VG 150	-5.....+100	Degol BG 150	Mobilgear 629	Energol GR-XP150	Omala 150	Belgear M-150-Süper	GEM 1 150	Spartan EP 150
	ISO VG 100	-5.....+100	Degol BG 100	Mobilgear 627	Energol GR-XP100	Omala 100	Belgear M-100-Süper	GEM 1 100	Spartan EP 100
Sentetik Yağ Synthetic Oil Synthetisch Öl	ISO VG 320	-25.....+140	Degol GS 320	Gylgoyle 320	Enersyn SG-XP320			Syntheso D 320 EP	Glycolube 320
	ISO VG 220	-25.....+140	Degol GS 220	Gylgoyle 220	Enersyn SG-XP220	Tivela WB		Syntheso D 220 EP	
	ISO VG 150	-30.....+140	Degol GS 150		Enersyn SG-XP150			Syntheso D 150 EP	
	ISO VG 100	-30.....+140			Enersyn SG-XP100			Syntheso D 100 EP	

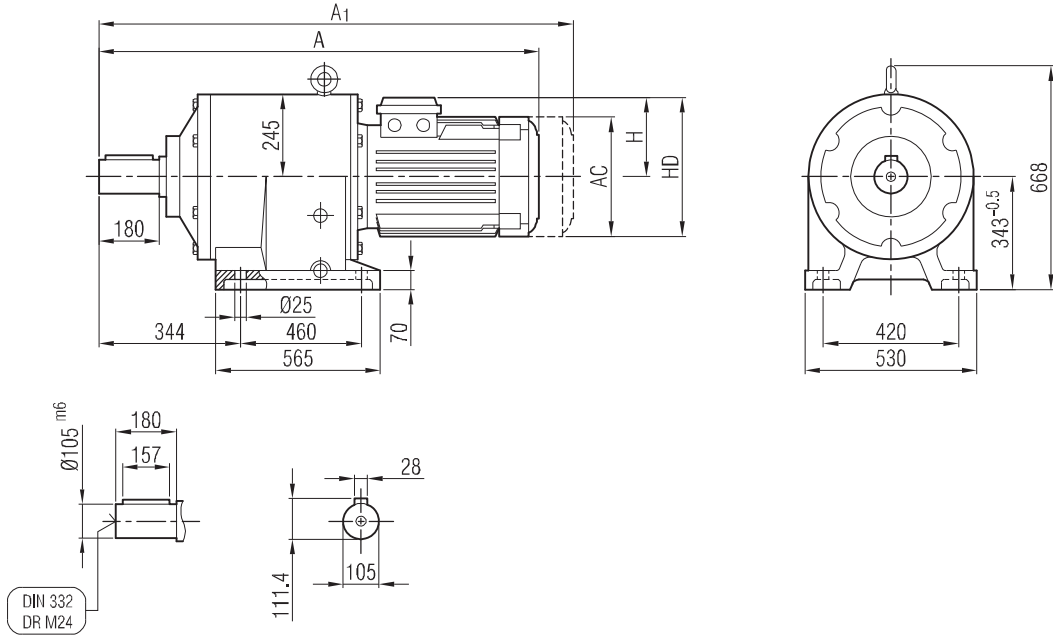
			
P1	P2	V1	V2
			
P3	P4	V3	V4
			
P5	P6	V5	V6
 Yağ Doldurma Vent Plug Entlüftung	 Yağ Seviye Tespit Oil Level Ölstand	 Yağ Boşaltma Drain Plug Ötblab	



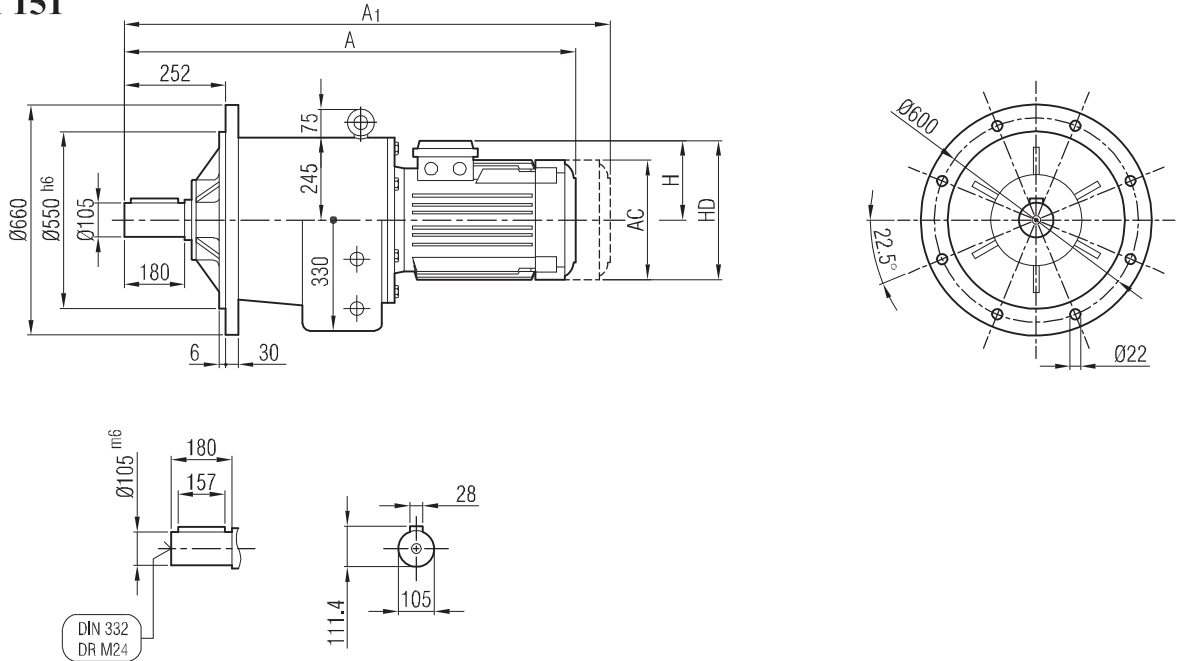
TİP Type Typ	Bağlantı Pozisyonları için Yağ Miktarları (litre) Oil Quantities for Mounting Positions (liter) Ölmengen Tabellen für Bauformen (liter)											
	P1	V1	P5	P6	V5	V6	P3	V3	P4	P2	V4	V2
İR_M 151	28			24			20			51		
İR_M 181	90			100			100			120		



İRAM 151



İRFM 151



	80	90 S	90 L	100	112	132 S	132 M	160 M	160 L	180 M	180 L	200	225 S	225 M	250	280 S	280 M
A							1168	1252	1296	1305	1343	1403	1406	1431	1507	1569	1569
A ₁							-	-	-	-	-	-	-	-	-	-	-
H							182	225	225	248	248	275	285	285	322	350	350
HD							314	385	385	428	428	475	510	510	572	630	630
AC							279	325	325	370	370	415	456	456	480	544	544

"A₁" Ölçüsü Frenli Motorlar içindir.

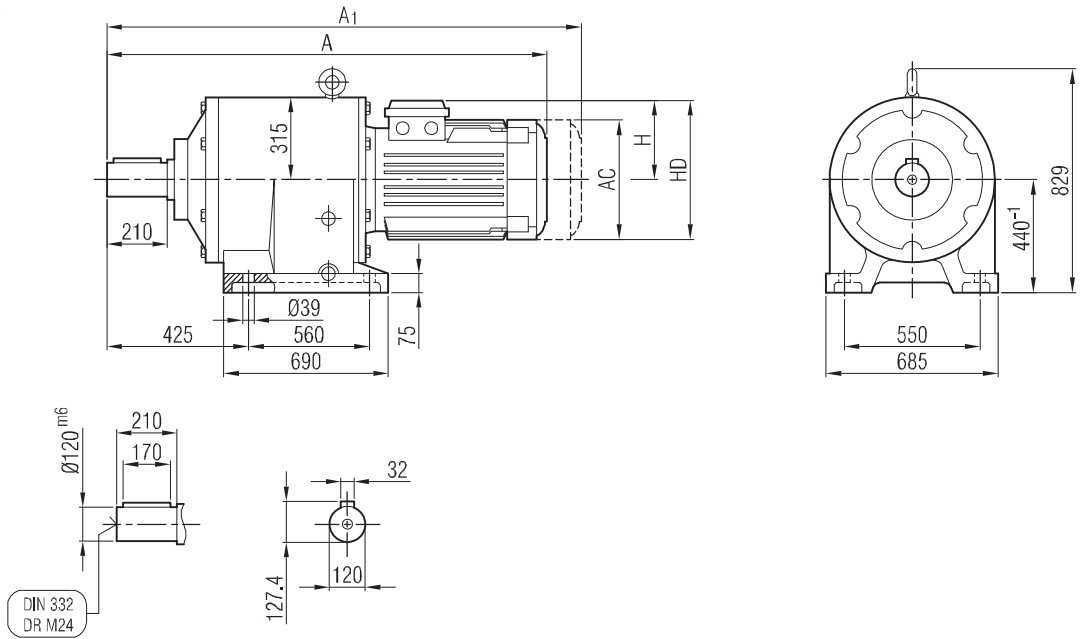
Dimension "A₁" is for motors with brake

Maß "A₁" ist für Motoren mit Bremse

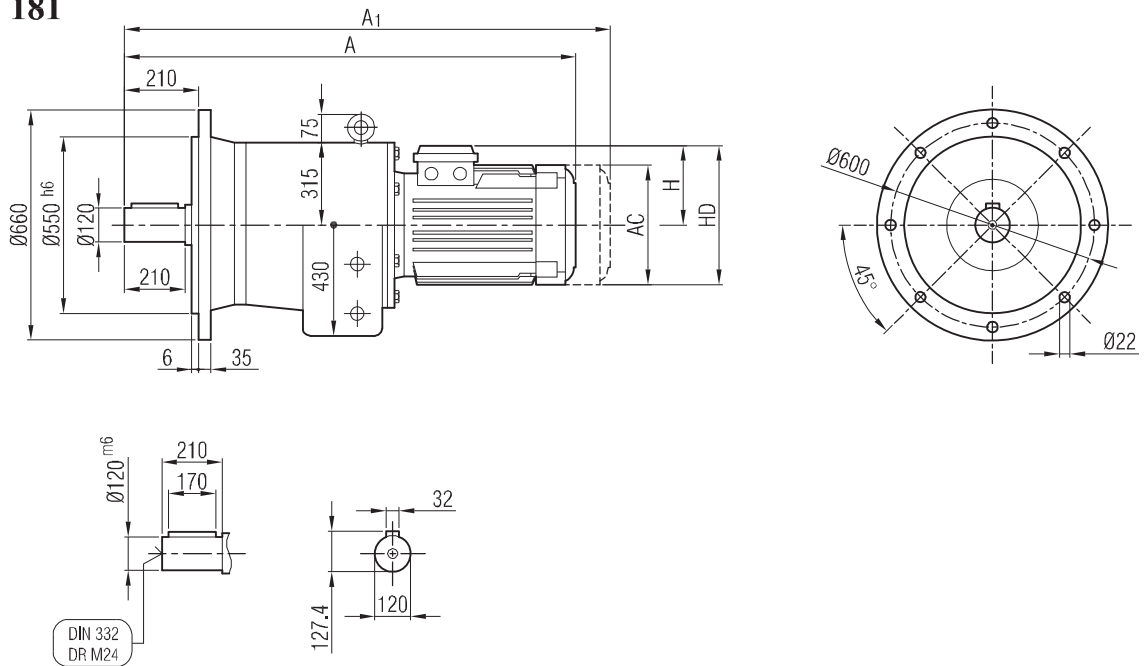




İRAM 181



İRFM 181



	100	112	132 S	132 M	160 M	160 L	180 M	180 L	200	225 S	225 M	250	280 S	280 M	315 S	315 M	315 L
A					1406	1406	1463	1501	1552	1572	1597	1650	1748	1748	1910	1910	1980
A ₁					-	-	-	-	-	-	-	-	-	-	-	-	-
H					225	225	248	248	275	285	285	322	350	350	510	510	510
HD					385	385	428	428	475	510	510	572	630	630	825	825	825
AC					325	325	370	370	415	456	456	480	544	544	614	614	614

"A₁" Ölçüsü Frenli Motorlar içindir.

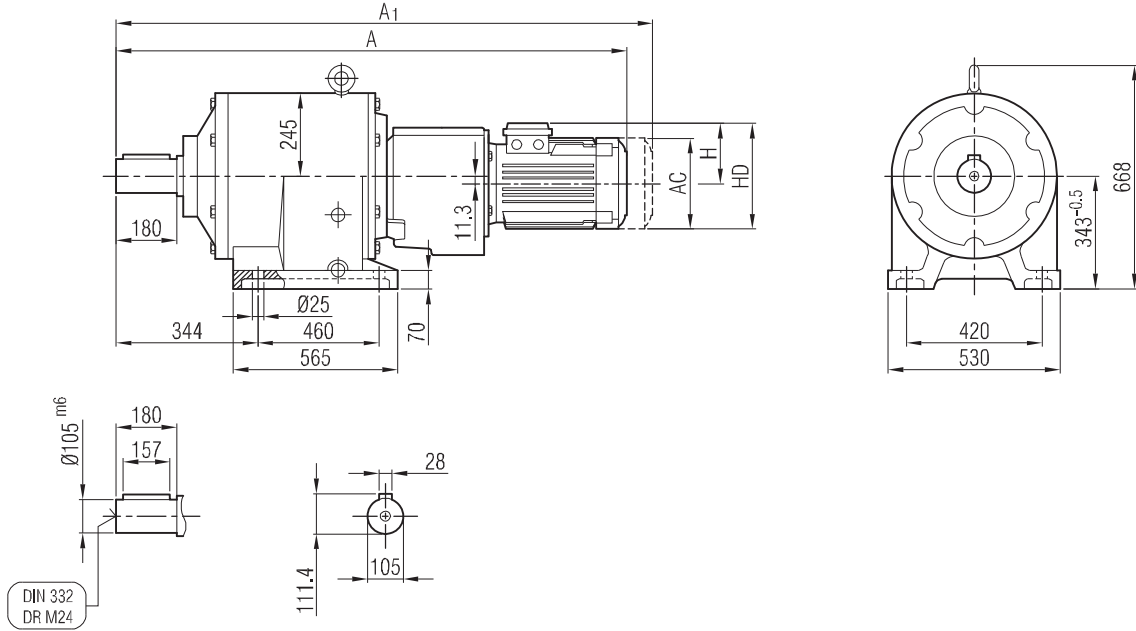
Dimension "A₁" is for motors with brake

Maß "A₁" ist für Motoren mit Bremse

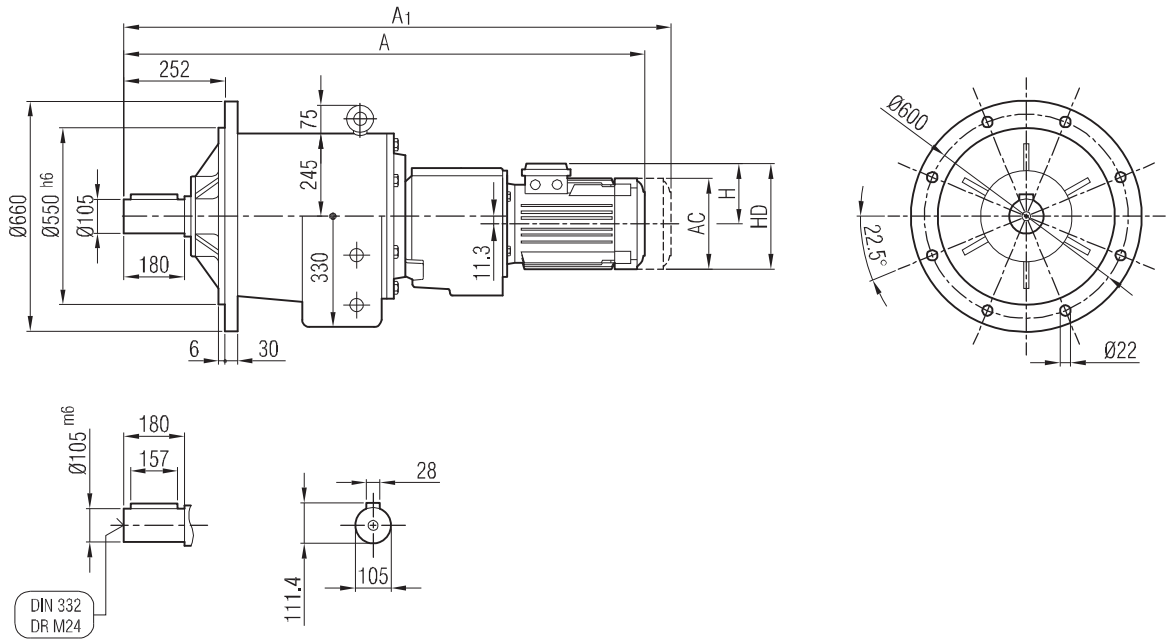




İRAM 151 İR 62 İRAM 151 İR 63



İRFM 151 İR 62 İRFM 151 İR 63



	56	63	71	80	90 S	90 L									
A				1194	1219	1244									
A ₁				1279	1302	1329									
H				118	132	132									
HD				198	222	222									
AC				158	193	193									

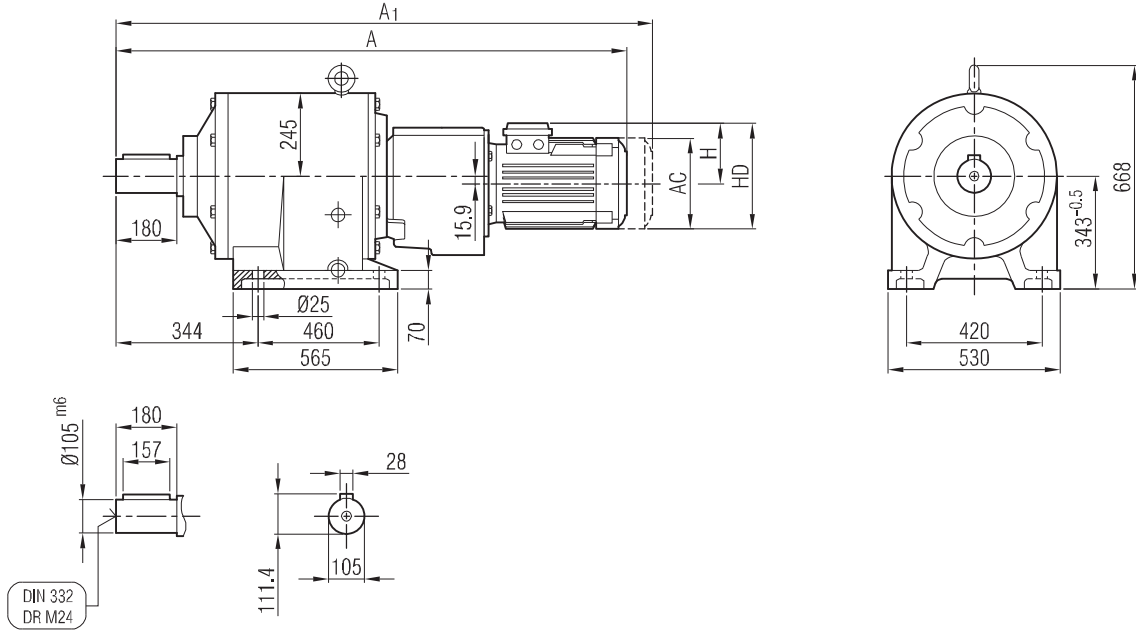
"A₁" Ölçüsü Frenli Motorlar içindir.
Dimension "A₁" is for motors with brake
Maß "A₁" ist für Motoren mit Bremse





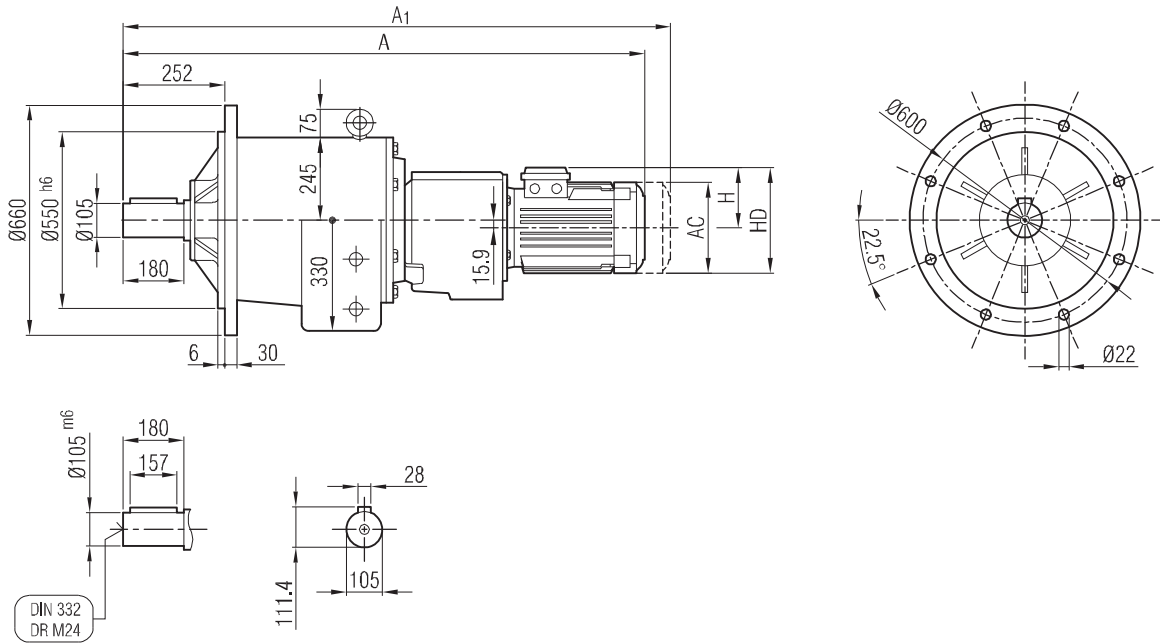
İRAM 151 İR 72

İRAM 151 İR 73



İRFM 151 İR 72

İRFM 151 İR 73



	56	63	71	80	90 S	90 L	100										
A							1320										
A ₁							1422										
H							141										
HD							241										
AC							217										

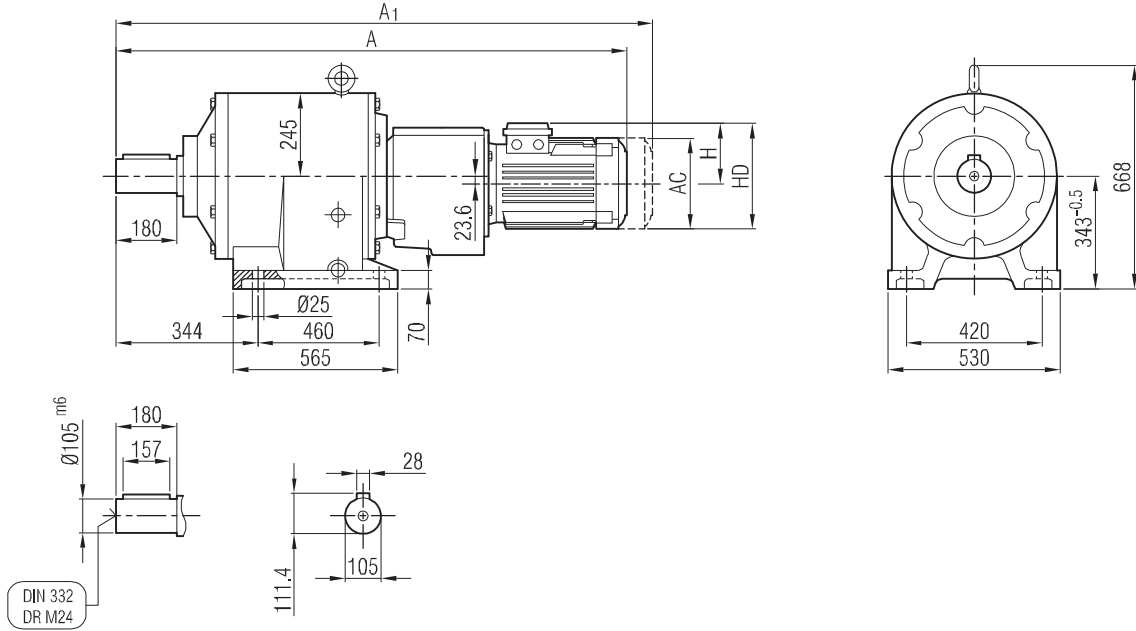
"A₁" Ölçüsü Frenli Motorlar içindir.
Dimension "A₁" is for motors with brake
Maß "A₁" ist für Motoren mit Bremse





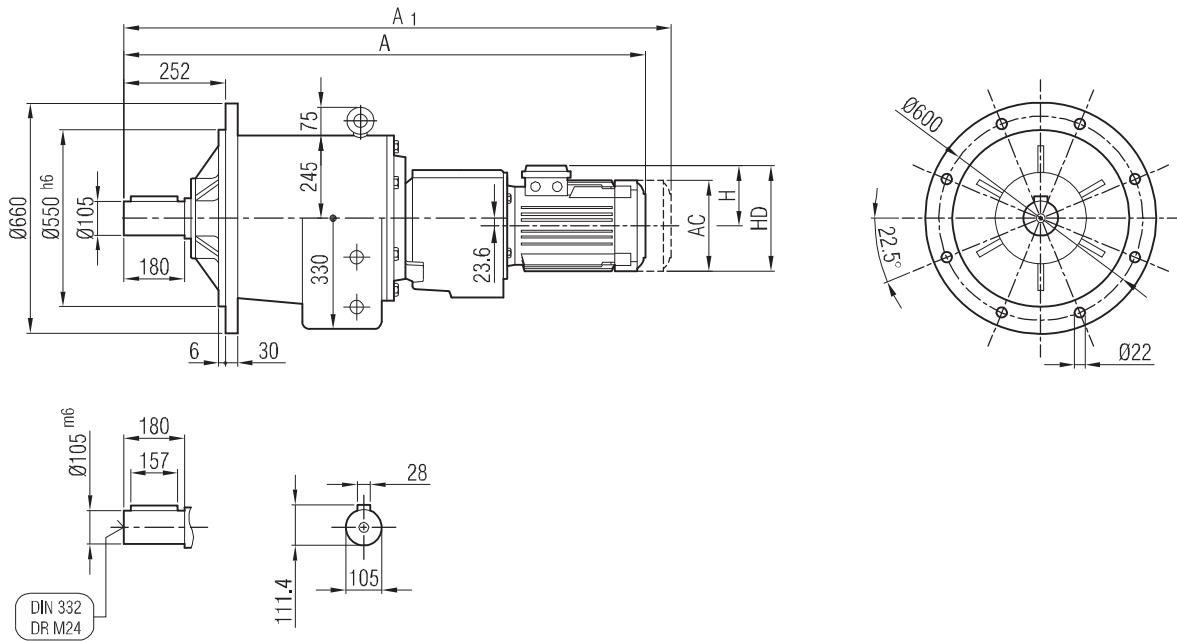
İRAM 151 İR 82

İRAM 151 İR 83



İRFM 151 İR 82

İRFM 151 İR 83



	56	63	71	80	90 S	90 L	100	112								
A								1390								
A ₁								1470								
H								149								
HD								261								
AC								232								

"A₁" Ölçüsü Frenli Motorlar içindir.
Dimension "A₁" is for motors with brake
Maß "A₁" ist für Motoren mit Bremse

