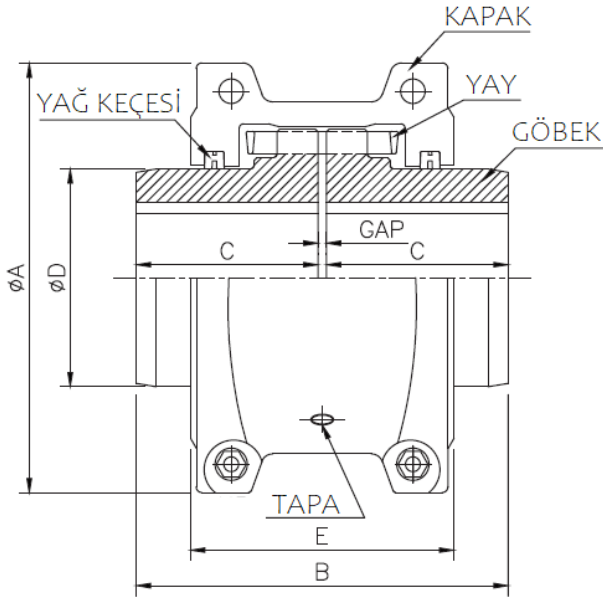


darka

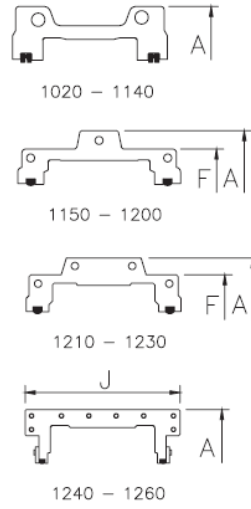
redüktör



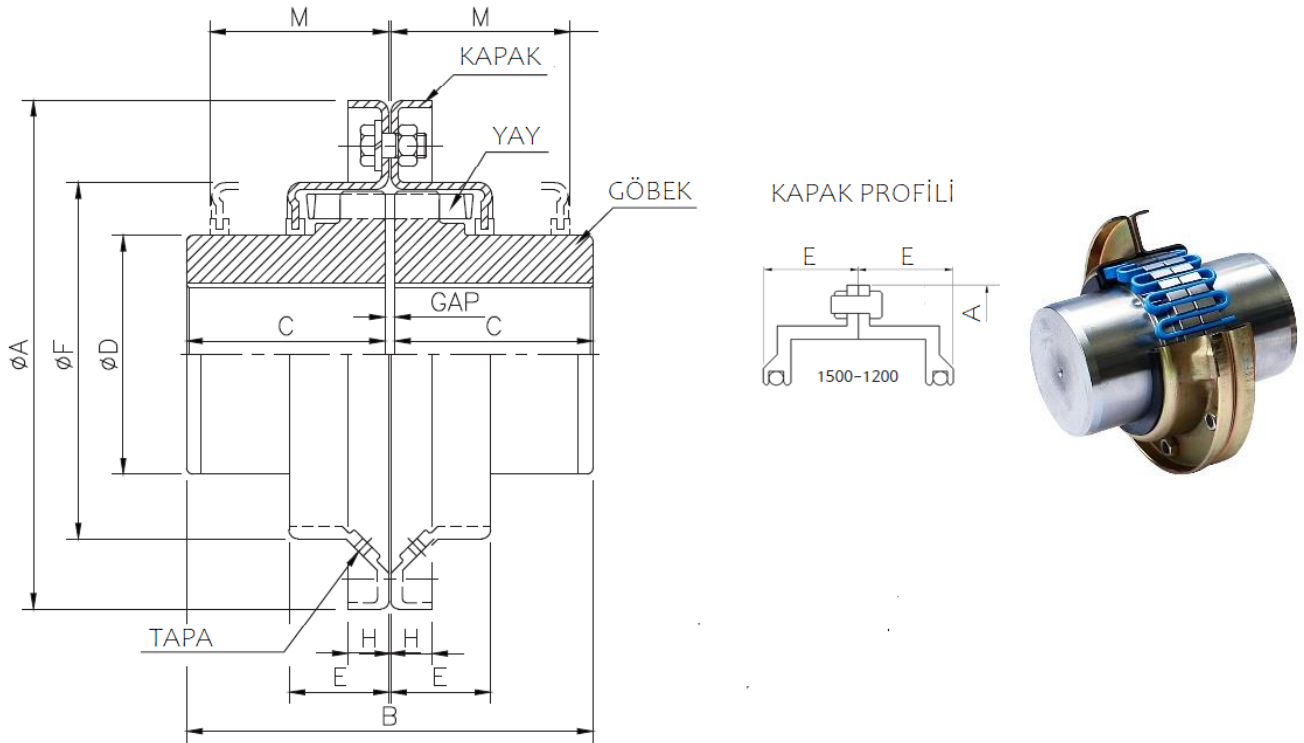
d-grid ÇELİK YAYLI KAPLIN



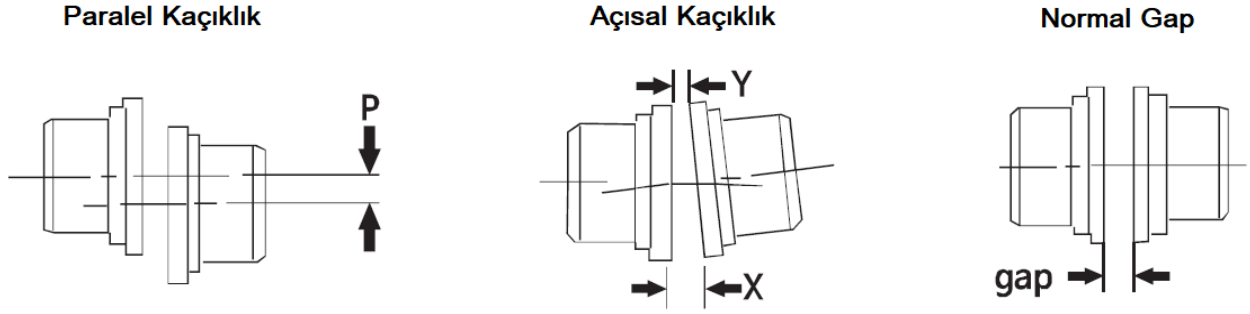
KAPAK PROFİLİ



Gövde	Maks. Devri d/d	Nom. Torku Tn	Göbek işleme Çapı (mm)		Ölçüler					Gap mm	Ağırlık kg	Yağ kg
			Maks.	Min.	A	B	C	D	E			
1020 H	4.500	52	28	13	101,6	98,0	47,5	39,7	66,5	3	1,9	0,03
1030 H	4.500	149	35	13	110,0	98,0	47,5	49,2	71,8	3	2,6	0,03
1040 H	4.500	249	43	13	116,9	104,6	50,8	57,1	70,0	3	3,4	0,05
1050 H	4.500	435	50	13	138,0	123,6	60,3	66,7	79,5	3	5,4	0,05
1060 H	4.350	684	56	20	150,0	130,0	63,5	76,2	92,0	3	7,3	0,09
1070 H	4.125	994	67	20	162,0	155,4	76,2	87,3	96,0	3	10	0,11
1080 H	3.600	2.050	80	27	194,0	180,8	88,9	104,8	116,0	3	18	0,17
1090 H	3.600	3.730	95	27	213,0	199,8	98,4	123,8	122,0	3	25	0,25
1100 H	2.440	6.280	110	42	250,0	245,7	120,6	142,0	155,5	4,5	42	0,43
1110 H	2.250	9.320	120	42	270,0	258,5	127,0	160,3	161,5	4,5	55	0,51
1120 H	2.025	13.700	140	61	308,0	304,4	149,2	179,4	191,5	6	75	0,73
1130 H	1.800	19.900	170	67	346,0	329,8	161,9	217,5	195,0	6	116	0,91
1140 H	1.650	28.600	200	67	384,0	374,2	184,1	254,0	201,0	6	171	1,13
1150 H	1.500	39.800	215	108	454,0	372,0	183,0	269,0	273,0	6	216	1,95
1160 H	1.350	55.900	240	121	501,0	402,0	198,0	305,0	279,0	6	304	2,81
1170 H	1.225	74.600	280	134	569,0	438,0	216,0	356,0	309,0	6	423	3,49
1180 H	1.100	103.000	300	153	630,0	484,0	239,0	394,0	321,0	6	594	3,76
1190 H	1.050	137.000	335	153	676,0	524,0	259,0	437,0	325,0	6	764	4,40
1200 H	900	186.000	360	178	757,0	564,0	279,0	498,0	356,0	6	1.042	5,62
1210 H	820	249.000	390	178	845,0	622,3	304,8	533,4	432,0	12,7	1.424	10,5
1220 H	730	336.000	420	203	921,0	662,7	325,0	572,0	490,0	12,7	1.785	16,1
1230 H	680	435.000	450	203	1.003,0	703,8	345,0	610,0	546,0	13	2.267	24,0
1240 H	630	559.000	480	254	1.087,0	749,0	368,0	648,0	648,0	13	2.950	33,8
1250 H	580	746.000	-	254	1.181,0	815,0	401,0	711,0	699	13	3833	50,1
1260 H	540	932.000	-	254	1.261,0	877,0	432,0	762,0	762,0	13	4.682	67,2

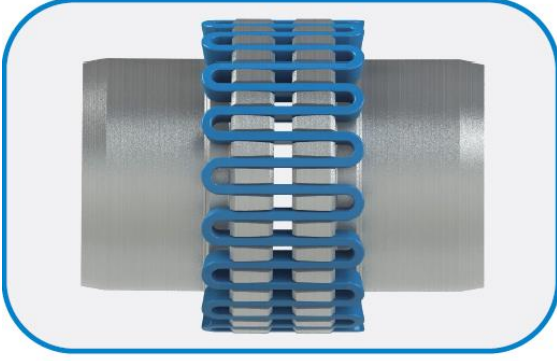


Gövde	Maks. Devri d/d	Nom. Torku Tn	Göbek İşleme Çapı (mm)		Ölçüler							Gap mm	Ağırlık kg	Yağ kg
			Maks.	Min.	A	B	C	D	F	H	E			
1020 V	6.000	52	28	13	111,1	98,01	47,5	39,7	62,5	9,5	24,2	3	1,9	0,03
1030 V	6.000	149	35	13	120,7	98,0	47,5	49,2	72,2	9,5	25,0	3	2,6	0,03
1040 V	6.000	249	43	13	128,5	104,6	50,8	57,1	80,0	9,5	25,7	3	3,4	0,05
1050 V	6.000	435	50	13	147,6	123,6	60,3	66,7	96,7	13	31,2	3	5,4	0,05
1060 V	6.000	684	56	20	162,0	130,0	63,5	76,2	109,8	13	32,2	3	7,3	0,09
1070 V	5.500	994	67	20	173,0	155,4	76,2	87,3	120,7	13	33,7	3	10,0	0,11
1080 V	4.750	2.050	80	27	200,0	180,8	88,9	104,8	147,4	13	44,2	3	18,0	0,17
1090 V	4.000	3.730	95	27	231,8	199,8	98,4	123,8	165,7	13	47,7	3	25,0	0,25
1100 V	3.250	6.280	110	42	266,7	245,7	120,6	142,0	196,8	16	60,2	4,5	42,0	0,43
1110 V	3.000	9.320	120	42	285,8	258,5	127,0	160,3	285,8	16	63,3	4,5	54,0	0,51
1120 V	2.700	13.700	140	61	319,0	304,4	149,2	179,4	319,0	16	73,4	6	73,0	0,73
1130 V	2.400	19.900	170	67	377,8	329,8	161,9	217,5	377,8	22	75,4	6	114,0	0,91
1140 V	2.200	28.600	200	67	416,0	374,2	184,1	254,0	416,0	22	78,5	6	171,0	1,13
1150 V	2.000	39.800	215	108	476,3	372,0	183,0	269,0	379,0	-	106,0	6	228,0	1,95
1160 V	1.750	55.900	240	121	533,4	402,0	198,0	305,0	427,0	-	114,0	6	319,0	2,81
1170 V	1.600	74.600	280	134	584,2	438,0	216,0	356,0	480,0	-	119,0	6	435,0	3,49
1180 V	1.400	103.000	300	153	630,0	484,0	239,0	394,0	545,0	-	129,0	6	584,0	3,76
1190 V	1.300	137.000	335	153	685,0	524,0	259,0	437,0	585,0	-	144,0	6	772,0	4,40
1200 V	1.100	186.000	360	178	737,0	564,0	279,0	498,0	645,0	-	145,0	6	1.045,0	5,62

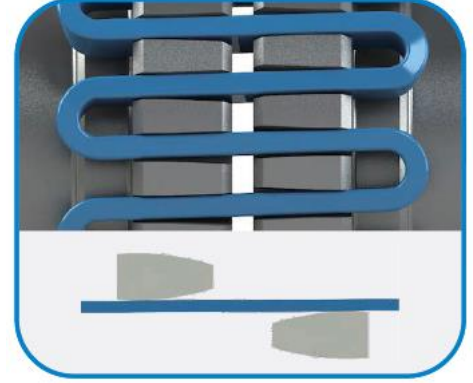


Gövde	Önerilen		Uygulama		Normal Gap $\pm 10\%$
	Paralel P	Açısal ($1/16^\circ$) X - Y	Paralel P	Açısal ($1/4^\circ$) X - Y	
1020	0,15	0,06	0,30	0,24	3
1030	0,15	0,07	0,30	0,29	3
1040	0,15	0,08	0,30	0,32	3
1050	0,20	0,10	0,40	0,39	3
1060	0,20	0,11	0,40	0,45	3
1070	0,20	0,12	0,40	0,50	3
1080	0,20	0,15	0,40	0,61	3
1090	0,20	0,17	0,40	0,70	3
1100	0,25	0,20	0,50	0,82	4,5
1110	0,25	0,22	0,50	0,90	4,5
1120	0,28	0,25	0,56	1,01	6
1130	0,28	0,30	0,56	1,19	6
1140	0,28	0,33	0,56	1,34	6
1150	0,30	0,39	0,60	1,56	6
1160	0,30	0,44	0,60	1,77	6
1170	0,30	0,50	0,60	2,00	6
1180	0,38	0,56	0,76	2,26	6
1190	0,38	0,61	0,76	2,44	6
1200	0,38	0,68	0,76	2,72	6

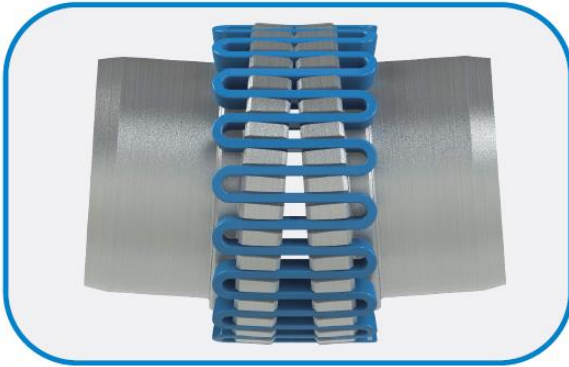
Paralel Kaçıklık



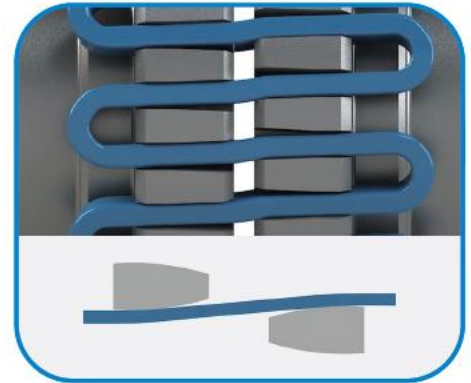
Hafif Yük



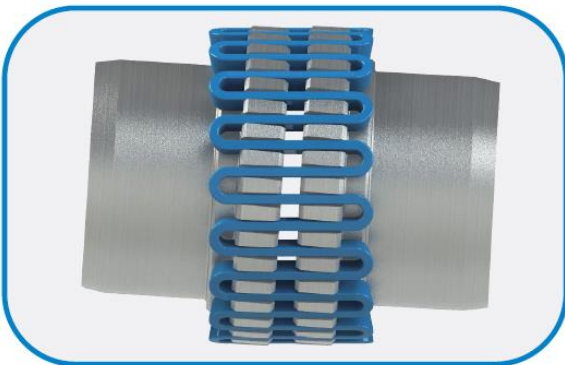
Açısal Kaçıklık



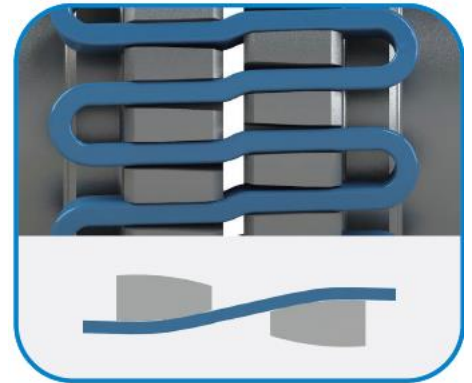
Normal Yük



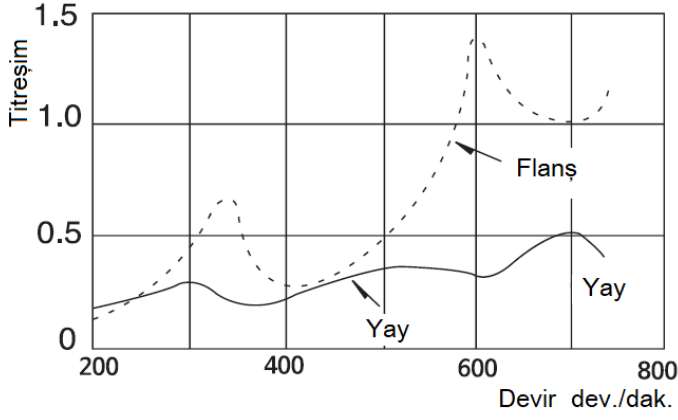
Eksenel Kaçıklık



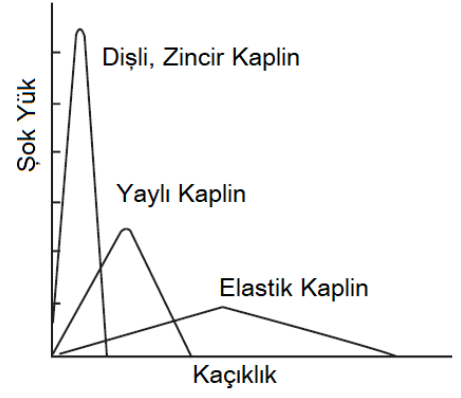
şok yük



Aşağıdaki grafikler, yaylı kaplinin mükemmel performansını göstermektedir.

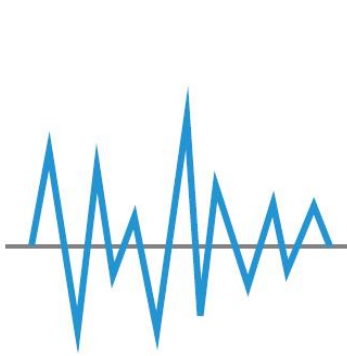


Titreşim Sönümlenme



Şok Yük Sönümlenme

Yaylı Kaplin Şok & Titreşim



Giriş : Şok yük ve titreşim



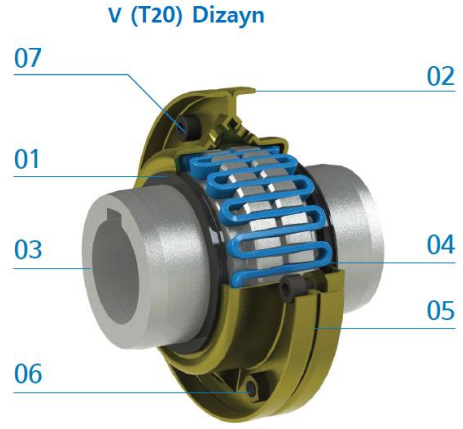
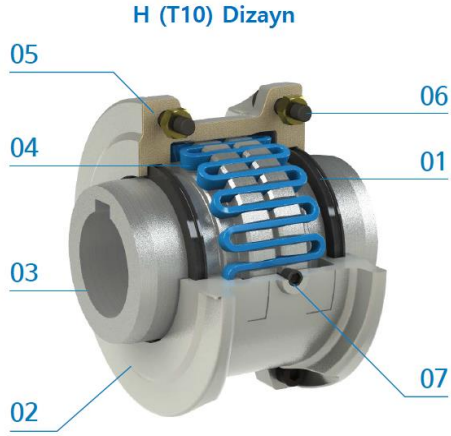
Çıkış : İndirgenmiş titreşim ve şok sönümlenme

	1.5
	2.0
	2.5
	3.0

DARKA REDÜKTÖR MOTOR ve KAPLIN SAN. TİC. LTD.ŞTİ.

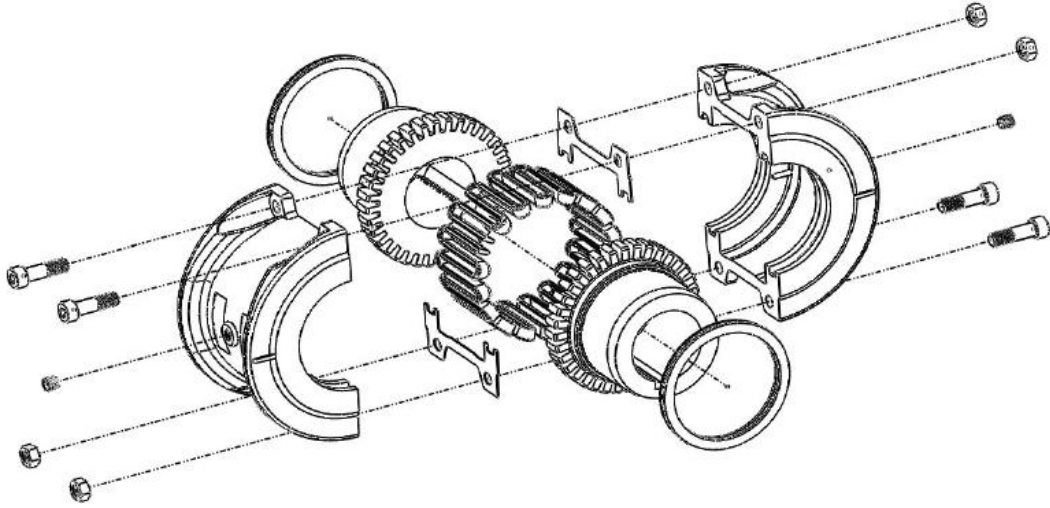
İkitelli Organize Sanayi Bölgesi Heskop Sanayi Sitesi M10 Blok No:181 Başakşehir / İstanbul

Tel : +90 212 567 66 86 / Faks : +90 212 567 66 96 / info@darkareduktor.com / www.darkareduktor.com

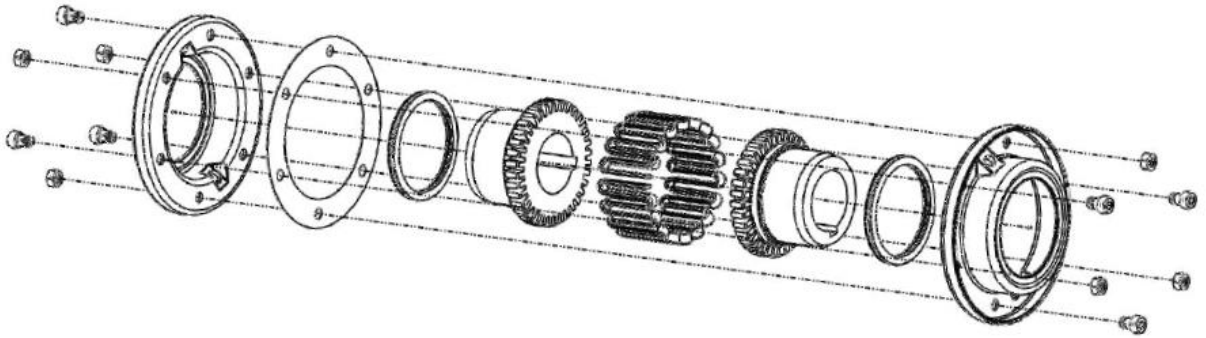


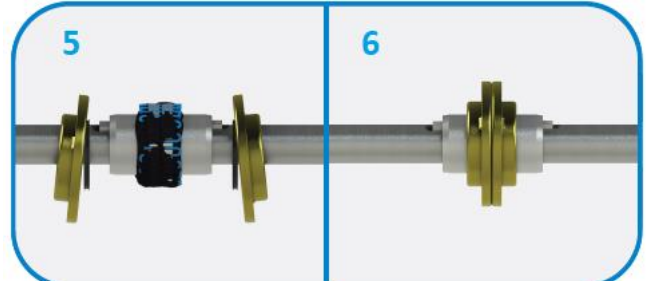
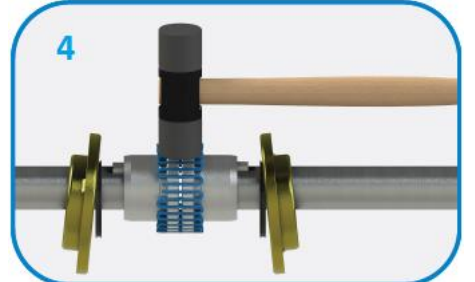
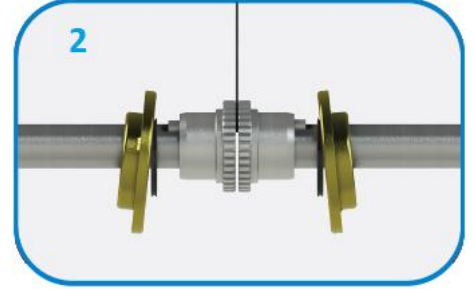
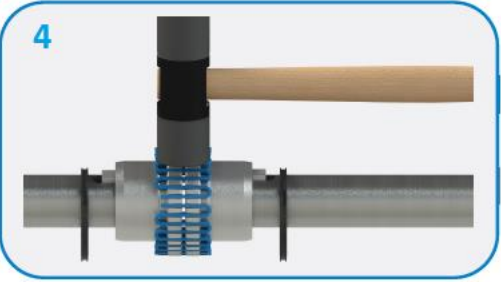
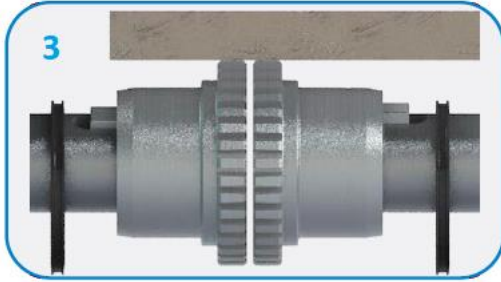
01 Yağ Keçesi 02 Kapak 03 Göbek 04 Yay 05 Conta 06 Civata 07 Tapa

H (T10) Dizayn



V (T20) Dizayn





Önerilen Gres Yağları

Üretici	Marka
Amoco Oil Co.	Amolith Grease #2
BP Oil Co.	Energrease LS-EP2
Chevron Inc.	Chevron Dura-Lith EP-2
Exxon Oil	Ronex MP
Gulf Oil Co.	Gulfcrown Grease #2
E.F Houghton & Co	Cosmolube #2
Phillips Petroleum	Philube IB & RB Grease
Shell Oil Co.	Alvania Grease #2
Standard Oil Co.	Factran #2
Sun Oil Co.	Prestige 42
SKF	LMCG-1
Texaco	Starplex HD2
Union Oil Co.	Union Unoba #2
Valvoline Oil Co.	Val-Lith EP#2

Çekirme Cıvata Ölçüleri

Gövde	B.C.D. (mm)	Cıvata (in)
1100	133	3/8
1110	149	7/16
1120	168	7/16
1130	197	5/8
1140	236	5/8
1150	263	3/4
1160	298	7/8
1170	338	1 1/8
1180	378	1 1/4
1190	413	1 1/2
1200	456	1 1/2
1210	497	1 1/2
1220	541	1 1/2
1230	586	1 1/2

